



Wonders of Wildlife Renovations & Expansions

Springfield, MO

November 27th, 2011

Weekly Construction Progress Photos

Prepared For:
Wonders of Wildlife

Prepared By:
THE WHITING-TURNER CONTRACTING COMPANY
5323 Millenia Lakes Boulevard, Suite 160
Orlando, FL 32839
Phone: 407-370-4500
Fax: 407-370-4499





Table of Contents

Section 1	Expo / CEC Progress Photos
Section 2	Wonders of Wildlife Building 'A'
Section 3	Wonders of Wildlife Building 'B'
Section 4	Wonders of Wildlife Building 'C'
Section 5	Connector Mall



Section 1

Expo / CEC

Progress Photographs



Aerial Photograph of EXPO/CEC



Installation of Rawhide Domes & OFCI Chandeliers in Expo Halls



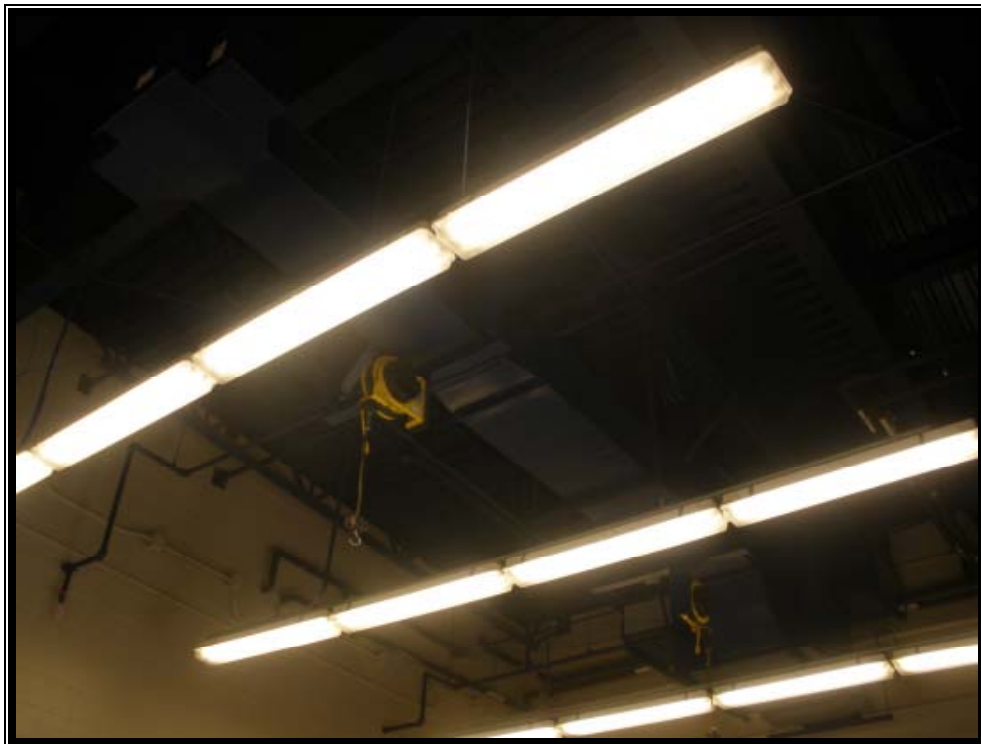
Snapshot of Corridor E104 with Floor Protection Removed



Installation of OFCI Lanterns at Covered Porch



Snapshot of Office E105 with Floor Protection Removed



Painting of Open Structure in Outdoor Lab E163



Installation of OFCI Chandelier in Multipurpose Room E103



Installation of Wood Deck Framing



Snapshot of Prefunction E136



Installation of Sidewalk at Expo/CEC



Section 2

Wonders of Wildlife Building 'A'

Progress Photographs



Mechanical Room Demolition



Basement Demolition



Basement Macro-Pile Installation



Second Floor Structural Steel Installation



Section 3

Wonders of Wildlife Building 'B'

Progress Photographs



Back of House Structural Steel



FRP Tanks



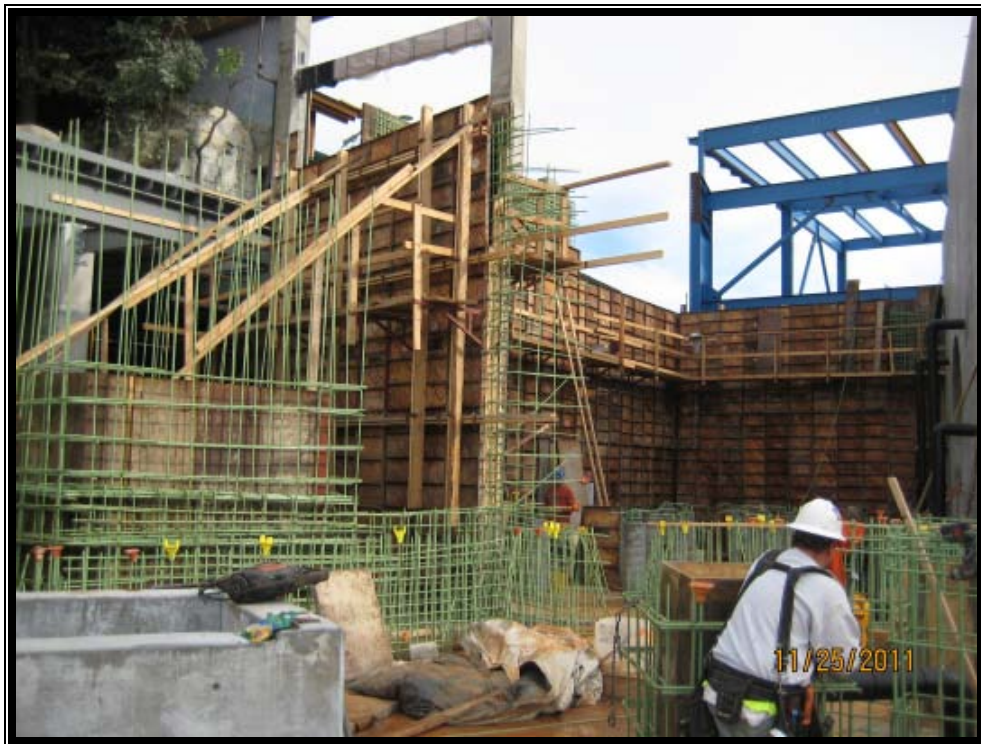
Back of House Snap Shot



Back of House FRP Tanks



Manatee Tank Snap Shot



Front of House Concrete Walls



Front of House Snap Shot



Back of House Snap Shot



Section 4

Wonders of Wildlife Building 'C'

Progress Photographs



Foundation Wall Backfill



Elevated Floor Slab Completion



Stingray Tank Foundation Forms



Stringray Tank Foundation Rebar



Stingray Tank Foundation Rebar



Front of House Snap Shot



Section 5

Connector Mall

Progress Photographs



Snapshot of the Connector Excavation



Snapshot of Connector Excavation



Snapshot of the Connector Excavation



Snapshot of Connector Excavation